

1.2 MW ewers station for the hospital in Bad Langensalza - low return temperatures for even greater cost-effectiveness



The ewers district heating transfer station

Initial situation

In Bad Langensalza, the new combined heat and power plant, located in a former grain silo, is now being used to much greater capacity. Up to now, it has supplied the South residential area with district heating. Recently, the 1.2 MW ewers station's low return temperatures have enabled the CHP unit to additionally supply the Hufeland Klinikum and the surrounding connected houses with district heating. The higher capacity utilization results in greater overall economic efficiency.

The Hufeland Klinikum in Bad Langensalza is designed for around 8,000 patients and is one of the medium-sized hospitals in Germany. The Hufeland Klinikum is an academic teaching hospital with around 1,300 qualified employees.

If you have any questions, please feel free to contact us at any time.



Hufeland Clinical Center Photo: www.hufeland.de



Hufeland Clinical Center Photo: www.hufeland.de



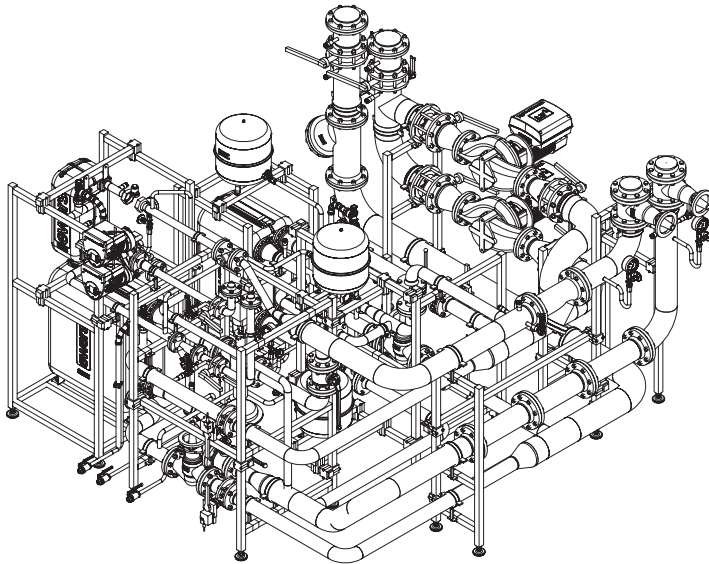
Construction cogeneration plant Photo: www.tlz.de

1.2 MW ewers station for the hospital in Bad Langensalza - low return temperatures for even greater cost-effectiveness

The ewers solution

District heating transfer station

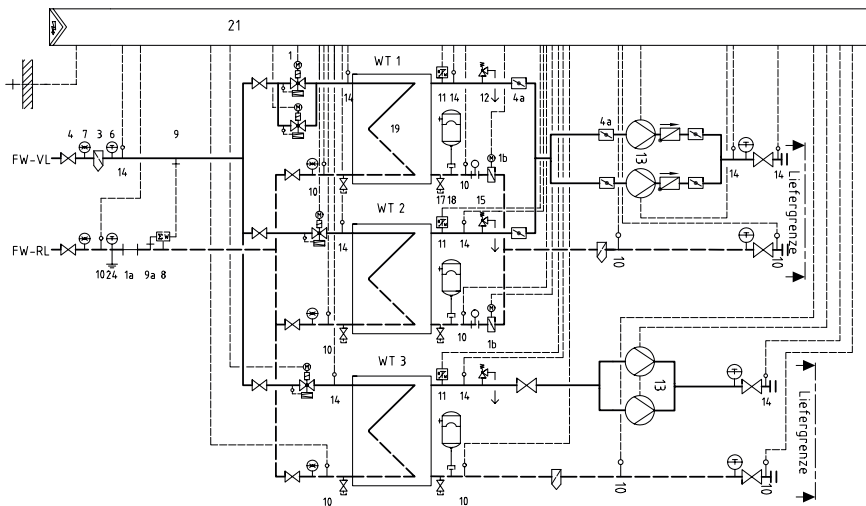
- Power: 1,2 MW
- Nominal width: DN125 / DN150
- Pressure stage: PN16 / PN6
- Temperatures: Primary 95 / 65 °C
 Secondary 90 / 62 °C



Technical drawing of the station



ewers station in the boiler room of the hospital



Hydraulic representation of the station

We reserve all rights for this technical document. The copyright notice DIN 16016 applies. Technical changes, errors and misprints excepted. Photos and illustrations may contain optional accessories.

ewers Heizungstechnik GmbH
 Zur Brinke 4-6
 D-33758 Schloß Holte-Stukenbrock

Phone +49(0)5207 | 9190-0
 Fax +49(0)5207 | 9190-48
 E-mail info@ewers.de

Niederlassung Wittenberg
 Platanenweg 20
 D-06886 Lutherstadt Wittenberg

Phone +49(0)3491 | 6220-0
 Fax +49(0)3491 | 6220-50
 E-mail info@ewers.de

www.ewers.de