

GREEN DISTRICT HEATING FOR EVERY RESIDENTIAL UNIT IN LEMGO - WITH 60 EC.1 COMPACT DISTRICT HEATING STATIONS (UP TO 50KW)



ewers compact station for district heating transfer

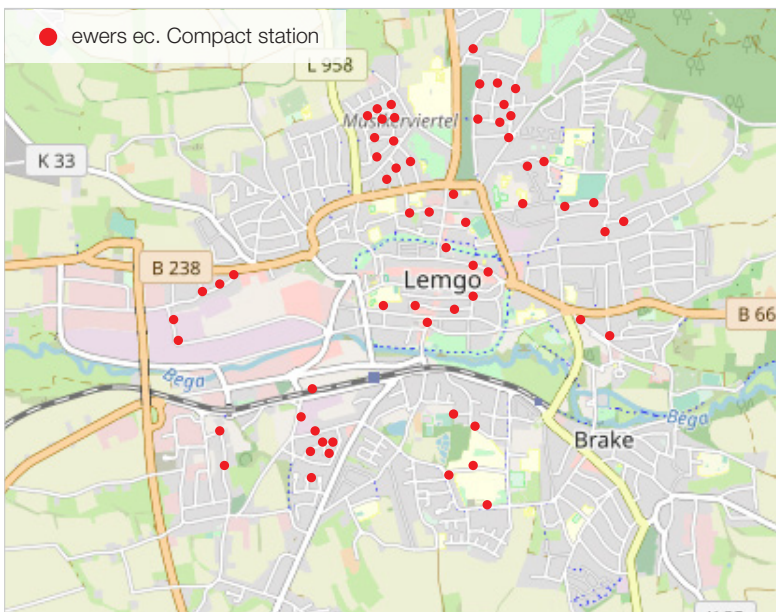
Initial situation

A district heating network almost 60 km long runs through Lemgo and is operated by Stadtwerke Lemgo. In addition, numerous local heating islands are used, where a combined heat and power plant supplies smaller areas. To ensure that the heat reaches all households and businesses in Lemgo in an environmentally friendly and energy-efficient manner, ewers supplies around 60 compact stations to Stadtwerke Lemgo.

The ewers compact stations of the ec.1 series with storage system for coiled pipe storage tanks and various heating circuit for radiators and underfloor

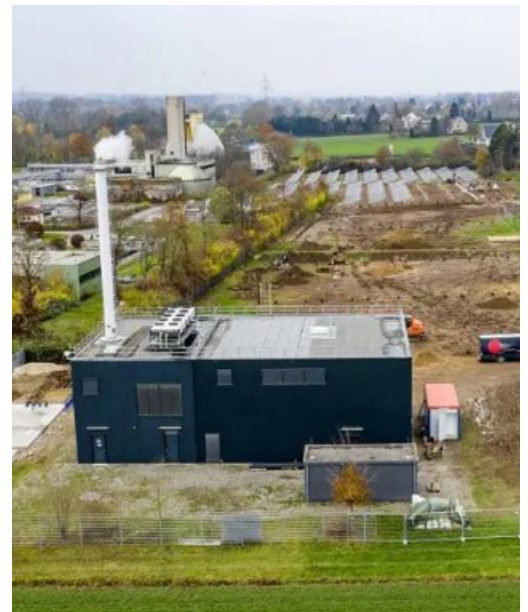
The ewers compact stations are suitable for all kinds of heating networks and buildings with low to medium performance requirements. ewers compact stations meet the highest demands on heat output and ease of operation.

If you have any questions, please do not hesitate to contact us.



Site plan ec. Compact stations in Lemgo

Photo: www.freecountrymaps.de



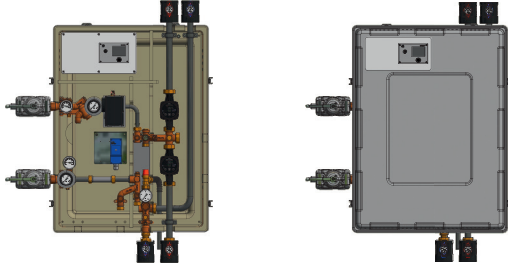
Public utilities

Photo: www.stadtwerke-lemgo.de

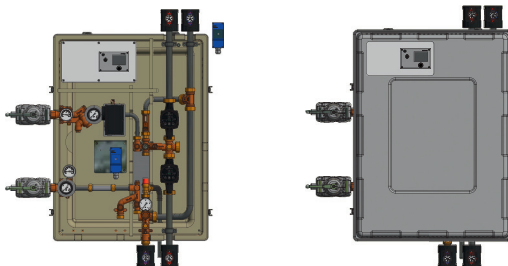
www.ewers.de

GREEN DISTRICT HEATING FOR EVERY RESIDENTIAL UNIT IN LEMGO - WITH 60 EC.1 COMPACT DISTRICT HEATING STATIONS (UP TO 50KW)

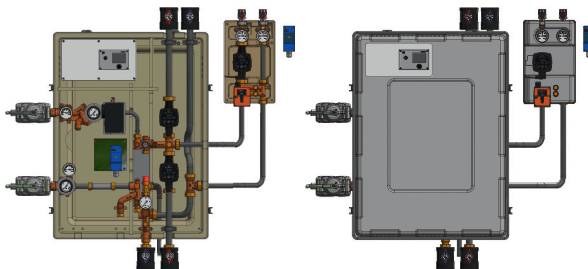
ec.1.03



ec.1.04



ec.1.05



Technical drawing of the ec.1 compact stations

The ewers solution

ec.1.03 District heating compact station
(for radiators heating)

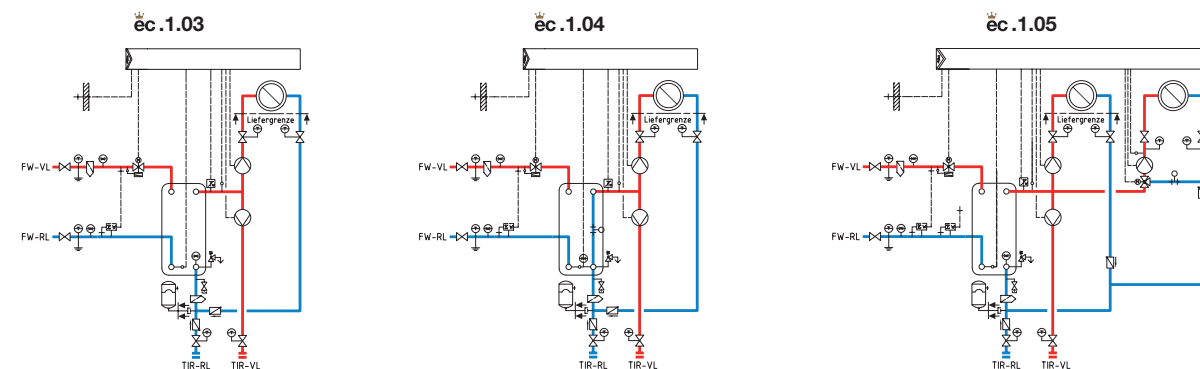
- Power: 15kW
- Nominal width: DN20 / DN25
- Pressure stage: PN16 / PN6
- Temperatures: Primary 90/50 °C
Secondary 70/48 °C

ec.1.04 District heating compact station
(for underfloor heating FBH)

- Power: 15kW
- Nominal width: DN20 / DN25
- Pressure stage: PN16 / PN6
- Temperatures: Primary 90/50 °C
Secondary 70/48 °C

ec.1.05 District heating compact station
(2 heating circuits for radiators + FBH)

- Power: 15kW
- Nominal width: DN20 / DN25
- Pressure stage: PN16 / PN6
- Temperatures: Primary 90/50 °C
Secondary 70/48 °C



Hydraulic representation of the ec.1 compact stations

We reserve all rights for this technical document. The copyright notice DIN 16016 applies.
Technical changes, errors and misprints excepted. Photos and illustrations may contain optional accessories.