

SCHOOL FOR DIETARY ASSISTANTS AT BETHEL PROTESTANT HOSPITAL (EVKB) IS SUPPLIED WITH DISTRICT HEATING



The ewers solution: A modern district heating transfer station with distributor for four heating circuits and flow-through drinking water system

Initial situation

The Bethel Protestant Clinical Centre in North Rhine-Westphalia is one of the most important healthcare facilities in the region. As part of a refurbishment project, the clinic's 60-year-old school for dietetic assistants is being modernised and will receive an efficient district heating supply. In addition to the practice rooms and classrooms, the school also has residential units that are rented out to students of the clinic as well as to private individuals.

Around 100 of these residential units are heated by the ewers district heating transfer station with 475 kW including distributor and ewers flow-through drinking water system with 150 kW. The distributor is equipped with four heating circuits that supply the school with heat in the south, north, west and east directions.

If you have any questions, please do not hesitate to contact us.



School for Dietary Assistance at the Protestant Hospital Bethel (EvKB) Photo: google.com



The old gas heating system was replaced. Photo: ewers

SCHOOL FOR DIETARY ASSISTANTS AT BETHEL PROTESTANT HOSPITAL (EVKB) IS SUPPLIED WITH DISTRICT HEATING

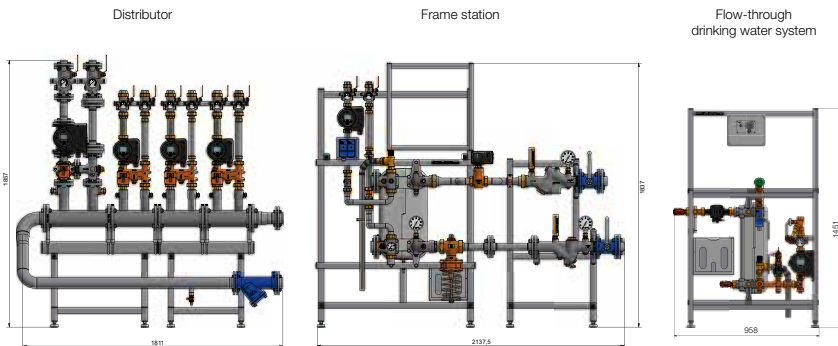
The ewers solution

District heating station

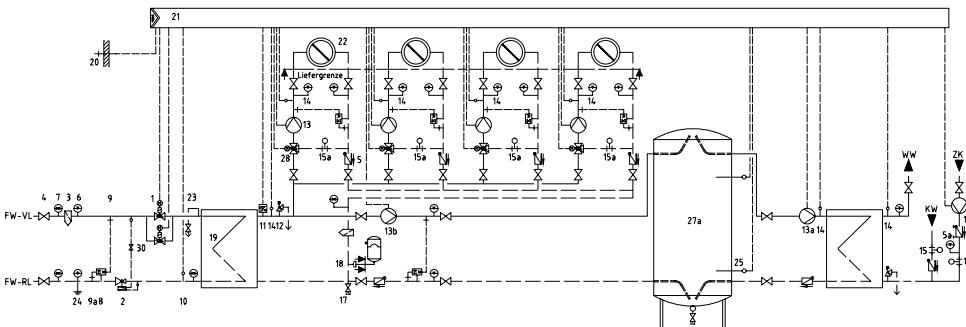
- Power: 475 kW
- Nominal width: DN50/DN65
- Pressure level: PN16/PN6
- Temperatures: Primary 110/60 °C
Secondary 70 /50 °C

Flow-through drinking water system

- Power: 150 kW
- Nominal width: DN25/DN25
- Pressure level: PN16/PN6
- Temperatures: Overcircle 65/35 °C
Charging circuit 60 /10 °C



Technical drawing



Hydraulic diagram

We reserve all rights for this technical document. The copyright notice DIN 16016 applies.
 Technical changes, errors and misprints excepted. Photos and illustrations may contain optional accessories.

ewers Heizungstechnik GmbH
 Zur Brinke 4-6
 D-33758 Schloß Holte-Stukenbrock

Phone +49 5207 9190-0
 Fax +49 5207 9190-48
 E-mail info@ewers.de

Branch office Wittenberg
 Platanenweg 20
 D-06886 Lutherstadt Wittenberg

Phone +49 3491 6220-0
 Fax +49 3491 6220-50
 E-mail info@ewers.de

www.ewers.de