

ENERGY-EFFICIENT REFURBISHMENT & HISTORIC PRESERVATION



The listed building in Bielefeld

Initial situation

The property is a listed residential building built in 1928, which was used in the past by the employees of the company Oetker. In 2018, the owner decided to convert the undeveloped attic for residential purposes. This inner-city densification created an additional six high-quality apartments in close proximity to the city center.

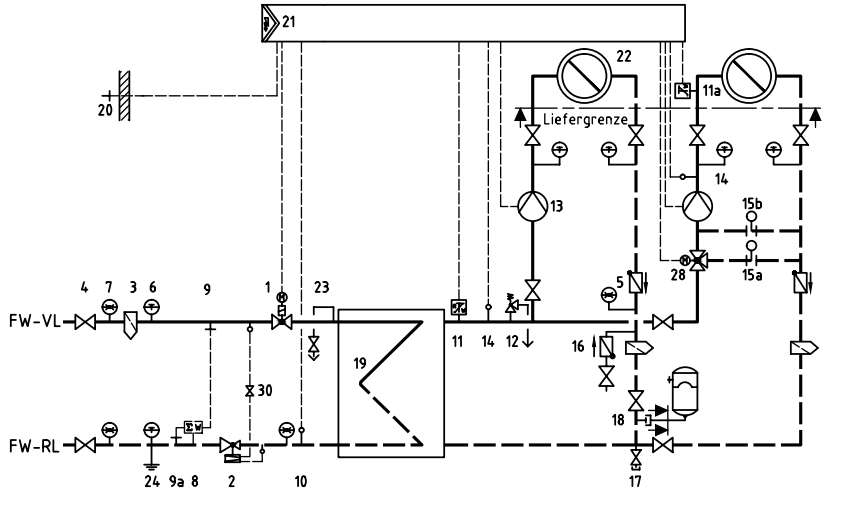
In this context, the previous gas heating system for the entire building was replaced. The premises allowed the gas heating system to be installed and replaced without any problems, as there was originally a coal cellar here. Thanks to the Energy Efficient Renovation subsidy (Bauen im Bestand / 115), the building owner opted for the future-oriented energy supply of district heating with the corresponding subsidies. In the existing floors radiators are installed, in the attic, due to the slopes and the architecture, an underfloor heating was installed, thus two heating circuits are necessary on the secondary side.

If you have any questions, please do not hesitate to contact us.



The ewers plant in the old coal cellar of the building

ENERGY-EFFICIENT REFURBISHMENT & HISTORIC PRESERVATION



Hydraulic representation of the ewers plant

The ewers solution

District heating transfer station

- Power: 170 kW
- Nominal width: DN32 / DN65
- Pressure stage: PN16 / PN6
- Heating circuits: HK1 Radiators 150 kW
HK2 FBH 20 kW
- Temperatures: Primary 110/60 °C
Secondary 70/50 °C

Request for quotation

General data

Date:	_____	Phone:	_____
Company:	_____	Mobile:	_____
Clerk:	_____	Fax:	_____
Street:	_____	Reply requested:	_____
Location:	_____	E-mail:	_____

Product areas

We are interested in the following product areas / products:

Heat Transfer Stations:

- Stations on mounting frames
- Stations in PU housing
- Special stations on mounting frames
- ewers Digital

Heating Systems:

- Drinking water heating systems
- Home stations
- Measuring & control modules
- Storage technology & accessories

Fitting groups & distribution systems:

- Fitting Groups
- Distribution Systems

Insulation:

- Diffusion-tight cold insulation
- PU thermal insulations
- PU insulation for heat transfer stations

In order to be able to prepare a concrete offer for you, we require further technical data on the hydraulic, thermal and control design. We will be happy to assist you with the planning and determination of the data.

We reserve all rights for this technical document. The copyright notice DIN 16016 applies. Technical changes, errors and misprints excepted. Photos and illustrations may contain optional accessories.

© ewers Heizungstechnik GmbH | Status: 03/2021