

DISTRICT HEATING CONNECTIONS WITH SYNERGY EFFECTS — 120 KW HEATING CAPACITY & 30 KW HOT WATER CAPACITY



The building of the OEVERMANN Hochbau GmbH in Gütersloh

Initial situation

On the premises of Wolters GmbH, manufacturer of nuts of all kinds, Oevermann Hochbau GmbH is building a long-awaited new branch for the Gütersloh site in 2020. The new office space will be sustainably heated with district heating. This energy source is located in the immediate vicinity on the Mohn-Media site of Bertelsmann GmbH. The local supplier, Fernwärme Gütersloh GmbH, provides the heat. Thus, all parties involved have a network of short connections with synergy effects.

Hydraulic diagram and
Technical drawing of the station
on page 2.

If you have any questions, please do
not hesitate to contact us.

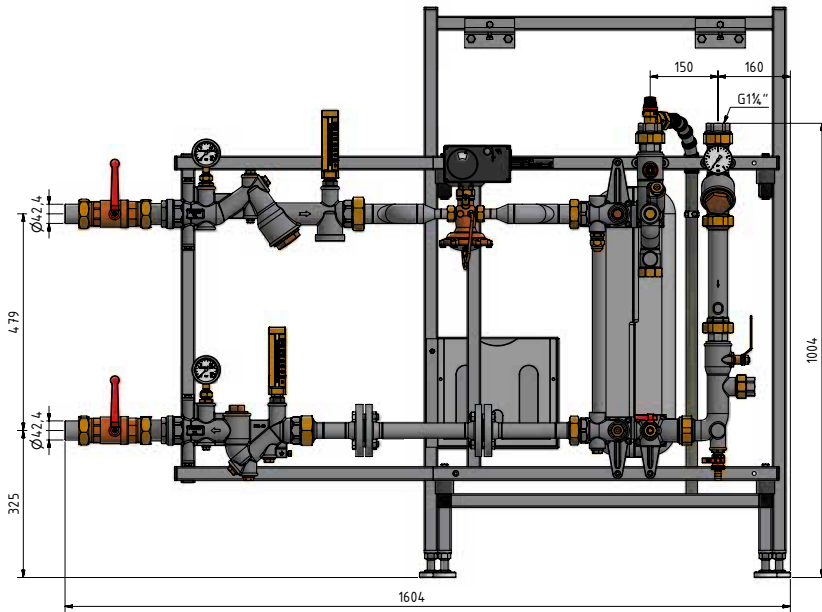


Station for district heating transfer



Station for district heating transfer

DISTRICT HEATING CONNECTIONS WITH SYNERGY EFFECTS — 120 KW HEATING CAPACITY & 30 KW HOT WATER CAPACITY

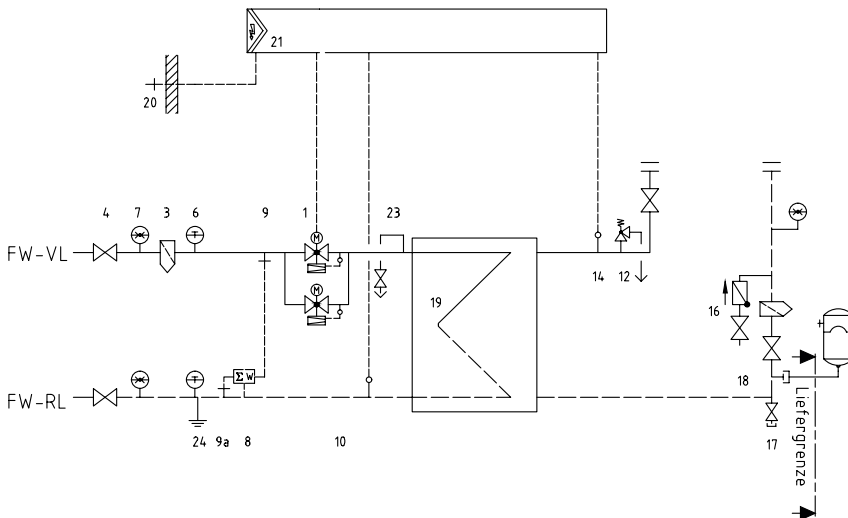


Drawing of the district heating compact station

The ewers solution

District heating compact station

- Power: 120 kW Heating capacity
30 kW Hot water power
Full/low load valve
- Nominal width: DN32 / DN32



Hydraulic representation

We reserve all rights for this technical document. The copyright notice DIN 16016 applies.
Technical changes, errors and misprints excepted. Photos and illustrations may contain optional accessories.

© ewers Heizungstechnik GmbH | Status: 08/2021