

### TRAIN STATION OF THE FUTURE GOES GREEN AND HEATED WITH DISTRICT HEATING (1.2 MW)



Kassel Central Station and Cultural Station

Photo: crep D Architekten BDA

#### Initial situation

Kassel Central Station has been operated and known as a cultural station since 1995. Kassel's cultural enterprises, the city's cultural office and Deutsche Bahn formed the initiative to set up the „KulturBahnhof“, occupying the premises no longer needed by the railroad with new, predominantly cultural uses.

The Kassel Kulturbahnhof is heated with district heating via a station from ewers. This is a special design with load control via 2 heat exchangers. The two equivalent heat exchangers are connected in series and share the load via an operating hours control.

The district heating of the Städtische Werke AG for Kassel is produced in combined heat and power (CHP) — efficient and environmentally friendly. Use energy twice — The energy released during combustion is used twice. On the one hand, to produce steam that starts a turbine to generate electricity, and on the other hand, to use the remaining heat from the steam to generate hot water for the district heating network.

Hydraulic diagram and Technical drawing of the station on page 2.

If you have any questions, please do not hesitate to contact us.



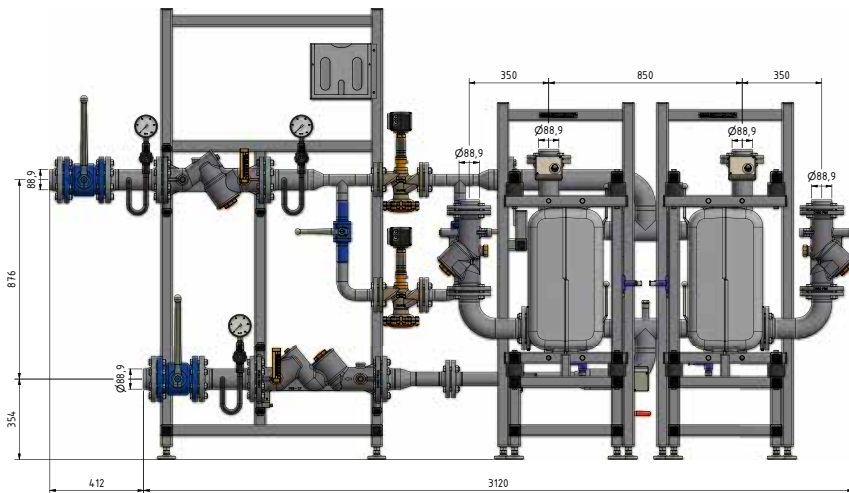
Station for district heating transfer

### TRAIN STATION OF THE FUTURE GOES GREEN AND HEATED WITH DISTRICT HEATING (1.2 MW)

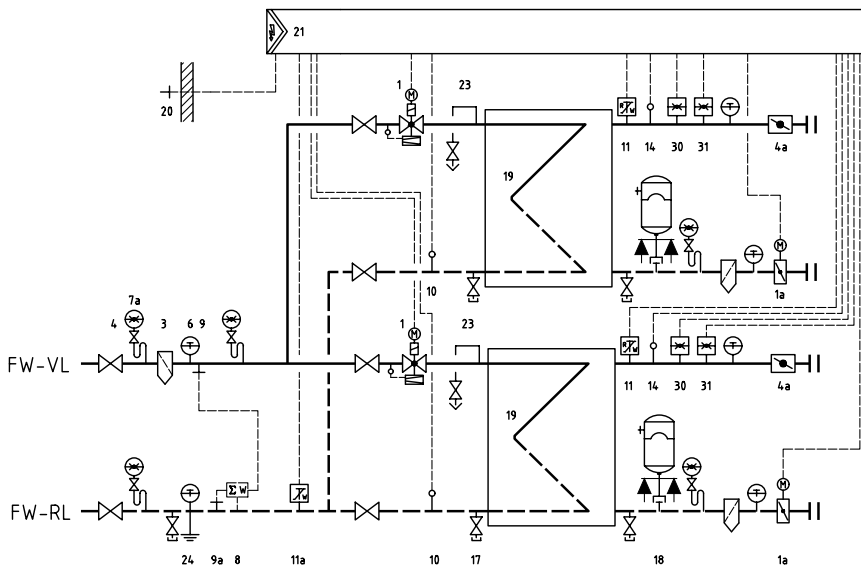
#### The ewers solution

District heating compact station

- Power: 1200 kW
- Nominal size: DN80 / DN80
- Pressure stage: PN25 / PN6
- Temperaturen: Primary 122/60 °C  
Secondary 80/58 °C



Drawing of the district heating compact station



Hydraulic representation

We reserve all rights for this technical document. The copyright notice DIN 16016 applies. Technical changes, errors and misprints excepted. Photos and illustrations may contain optional accessories.

© ewers Heizungstechnik GmbH | Status: 09/2021